



## LAKE GLENMAGGIE

Take a detour to the nearby Lake Glenmaggie, constructed to provide water for the Macalister Irrigation District, and is now also a popular spot for boating and camping enthusiasts.

**Glenmaggie Weir Wall** – picnic and toilet facilities, bush walks.

**Macalister River** – canoeing, fishing.

**Glenmaggie Winery** – cellar door open Sundays 11am – 4pm. Phone: 5145 1131



## TINAMBA

A tiny township located in the heart of dairy country, home to the Tinamba Food & Wine Festival held annually in April.

**Tinamba Hotel** – Enjoy delicious meals with Gippsland produce and wines. Open Wednesday to Sunday 12 – 2pm and Wednesday to Saturday 6pm – 8.30pm. For bookings phone: 5145 1484

**Tinamba General Store** – well preserved 1901 building, stocking all the essentials.

## MAFFRA

This is the largest town on the Gippsland Plains Drive and is the centre of the rich Macalister agriculture, pastoral and irrigation area.

**Maffra Sugar Beet Museum** – showcases history of the local sugar beet industry and early European exploration of Gippsland. Open: First Sunday of every month 10.00am – 4.00pm.

**Gippsland Vehicle Collection** in "The Maffra Shed" provides a large display of fascinating vehicles including cars, motorbikes, machinery, historic vehicles and memorabilia. Open: Friday to Monday 10am – 5pm throughout the year (Winter until 4pm)



**Macalister River Regional Park** - including skate park and children's colonial theme playground.

**The Pino Deriu Gemstone and Mineral Collection** in the restored Maffra Court House. Open Thursday to Monday 10am – 4pm. Phone: 5141 1811

**Duart Homestead** – dine at the grand Victorian homestead built in 1883. Phone: 5147 1985

**Maffra Market** first Sunday of every month 10am – 2pm

**Blue Pool** (Briagolong State Forest) A popular swimming hole in a gorge on Freestone Creek. Camping, bushwalking, toilets. Head to Briagolong from Maffra (20km) and continue along Freestone Creek Road. Not suitable for caravans.

## STRATFORD

After a leisurely drive in the country, re-join the Princes Highway at Stratford on the Avon River, home to the annual Shakespeare Festival. Browse the gift shops, admire the Turkish treasures at Turkish Magic, peruse local art galleries or purchase local produce including Gippsland wines and cheeses at **Wa De Lock Café/Deli/Wine Bar**.

**Knob Reserve** – picnic facilities on the Avon River and home to annual country music festival.



**GIPPSLAND PLAINS RAIL TRAIL** - following alongside the Gippsland Plains Scenic Drive C105 is the Gippsland Plains Rail Trail, a 63km trail extends from Traralgon to Stratford and suitable for cycling, walking, or horse riding. The trail features high quality dairy country and panoramic views of the Great Dividing Range.

Get off the beaten track...Escape the Princes Highway (A1) and follow the peaceful Gippsland Plains Scenic Drive (C105), as an alternative route between Traralgon and Stratford.

## GLENGARRY

The small township was established in 1883 when the loop railway line from Traralgon to Stratford, linking Bairnsdale. Although the railway line has been replaced with the **Gippsland Plains Rail Trail** the historic railway station still stands.

**Narkoojee Winery** – An award winning winery Narkoojee meaning “place of flowers”, was a dairy farm owned and operated by Edna and Athelstan Friend, since the early 1940s. Their son Harry planted the first experimental vines back in 1980. Sample some of their award winning noted by renowned wine writer James Halliday. Why not top it off with a local cheese platter or meal in the ‘By Jorg’ restaurant. Winery open: 10.30am – 4.30pm daily. Restaurant: Thursday to Sunday 11am– 4pm, Friday & Saturday 6pm – 10pm Phone: 5192 4257



**Apex Park** – picnic facilities, barbeque, water fountain and playground.

**Glengarry Hotel** – open 7 days, Bistro meals available 12-2pm and 6-8pm Tuesday to Sunday. Phone: 5192 4222

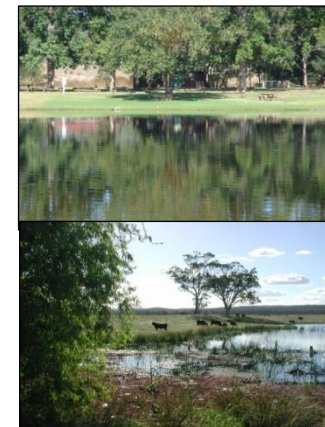
## TOONGABBIE

A historical town with a strong connection to the Walhalla Goldfields. You can see the **Ned Stringers Memorial** and the **Mechanics’ Institute Hall**, a restored two storey weatherboard hall built in 1883. Enjoy the quaint **Toongabbie Golf Course**, with wide fairways working their way up and back between tree-lined avenues. Overall the 18 hole course is flat with no bunkers, but the small target areas create a tough challenge.

## COWWARR

The tiny town of Cowwarr was established in the gold rush days of the 1860's where supplies had to be transferred from bullock wagons to pack horses for the Cobb and Co journey from Sale to the Walhalla goldfields.

The Cowwarr Weir was built on the Thomson River in 1958 and today it provides irrigation for the lush dairy pastures.



**Cowwarr Hotel** – lunch and dinner Wednesday to Sunday. Phone: 5148 9233.

**Cowwarr Weir** – picnic and toilet facilities, swimming and canoeing down the Thomson River.

## HEYFIELD

Located on the Thomson River, Heyfield services the timber industry, the dairy community and visitors to Lake Glenmaggie.

**Wetlands Centre** – walkways close to birds, timber industry display and local information. Open daily 10am - 3pm. Phone: 5148 3404

**Apex Park** – picnic facilities, playground.

